

THE HIGHTOWER REPORT
EIA ENERGY REPORT & HISTORICAL COMPARISON
14-Jan-2009

EIA CRUDE OIL

		----- EIA 1992 - 2008 -----										Current	Last Yr.
(In Millions of Barrels)		EIA					Highest		Lowest		EIA	EIA	
Week Of	Stocks	EIA Wkly Chg.	API Wkly Chg.	EIA Stocks Last Year	EIA Change From Last Year	EIA 17-Year Average	Highest Stocks	Year (Oldest Date)	Lowest Stocks	Year (Oldest Date)	Imports	EIA Capacity In Percent	Last Yr. EIA Capacity In Percent
12/12/08	321.289	0.525	0.089	294.8	26.489	311.532	346.115	1993	272.808	2003	9.673	84.12	87.84
12/19/08	318.188	-3.101	-4.201	291.7	26.488	310.409	348.525	1993	274.453	2003	9.118	84.68	88.09
12/26/08	318.737	0.549	8.68	288.7	30.037	306.817	348.357	1993	270.676	2003	9.249	82.46	89.38
01/02/09	325.419	6.682	-0.022	282.841	42.578	304.854	334.9	1994	268.954	2004	10.485	84.57	84.57
01/09/09	326.563	1.144	0.658	287.1	39.463	305.708	337.361	1992	263.97	2004	9.729	85.23	85.23
01/16/09				289.397		306.755	336.185	1992	265.182	2004			

EIA GASOLINE

		----- EIA 1992 - 2008 -----										EIA	EIA
(In Millions of Barrels)		EIA					Highest		Lowest		EIA	Demand	EIA
Week Of	Stocks	EIA Wkly Chg.	API Wkly Chg.	EIA Stocks Last Year	EIA Change From Last Year	EIA 17-Year Average	Highest Stocks	Year (Oldest Date)	Lowest Stocks	Year (Oldest Date)	Demand	Last Year	Imports
12/12/08	203.959	1.295	-1.638	209.5	-5.541	205.016	222.11	1993	191.42	1996	9.175	9.287	0.802
12/19/08	207.295	3.336	1.714	212.5	-5.205	204.639	223.106	1993	191.053	1996	8.867	9.446	1.254
12/26/08	208.103	0.808	1.848	215.5	-7.397	205.844	224.655	1993	192.014	1996	9.106	9.286	1.145
01/02/09	211.437	3.334	3.623	213.063	-1.626	208.858	228.804	1994	194.173	2000	8.99	9.304	0.852
01/09/09	213.505	2.068	3.642	215.256	-1.751	212.255	230.806	1994	198.24	2000	8.758	9.116	0.797
01/16/09				220.341		214.568	230.603	1994	200.703	2001		8.964	

EIA DISTILLATE

		----- EIA 1992 - 2008 -----										EIA	EIA
(In Millions of Barrels)		EIA					Highest		Lowest		EIA	Demand	EIA
Week Of	Stocks	EIA Wkly Chg.	API Wkly Chg.	EIA Stocks Last Year	EIA Change From Last Year	EIA 17-Year Average	Highest Stocks	Year (Oldest Date)	Lowest Stocks	Year (Oldest Date)	Demand	Last Year	Imports
12/12/08	133.523	2.936	-0.597	134.5	-1.0	132.340	152.754	1998	116.188	2000	4.09	4.629	0.175
12/19/08	135.337	1.814	-0.667	134.3	1.0	130.549	151.195	1998	114.693	2000	4.102	4.652	0.24
12/26/08	136.031	0.694	3.852	134.1	1.9	131.391	152.532	1998	116.064	2000	4.31	4.34	0.15
01/02/09	137.821	1.79	2.989	128.693	9.1	134.875	153.929	1999	116.761	2001	4.318	4.223	0.307
01/09/09	144.167	6.346	0.418	129.845	14.3	134.410	154.236	1999	115.174	2001	3.654	4.216	0.215
01/16/09				128.543		131.448	147.748	1999	110.647	2000		4.347	

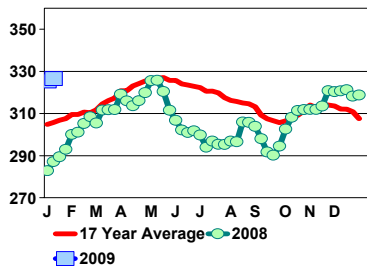
EIA HEATING OIL STOCKS

		----- EIA 1994 - 2008 -----									
(In Millions of Barrels)		EIA					Highest		Lowest		EIA
Week Of	Stocks	EIA Wkly Chg.	EIA Stocks Last Year	EIA Change From Last Year	EIA 15-Year Average	Highest Stocks	Year (Oldest Date)	Lowest Stocks	Year (Oldest Date)	Imports	
12/12/08	41.852	0.581	42.8	-0.948	59.297	82.554	1998	40.544	2007	0.145	
12/19/08	41.165	-0.687	41.9	-0.735	58.599	81.843	1998	39.82	2007	0.199	
12/26/08	41.218	0.053	41	0.218	58.095	80.952	1998	38.438	2007	0.15	
01/02/09	40.261	-0.957	36.065	4.196	59.567	79.876	1999	36.065	2008	0.307	
01/09/09	40.624	0.363	36.306	4.318	58.532	78.123	1999	36.306	2008	0.144	
01/16/09			35.955		56.886	73.472	1999	35.955	2008		

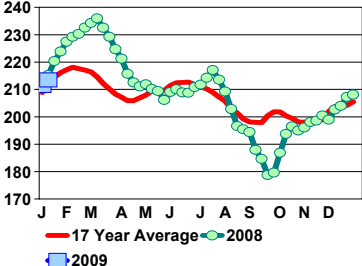
PRE-EIA REPORT ESTIMATE: January 9th, 2009

Crude Stocks +2.4 ml bls to +2.0 ml bls
Gasoline Stocks +1.8 ml bls to +1.4 ml bls
Distillate Stocks +1.3 ml bls to +1.0 ml bls

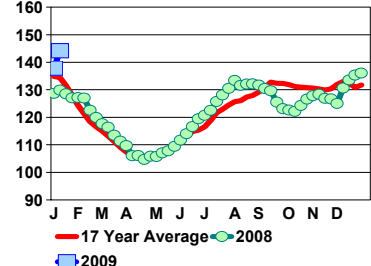
US EIA CRUDE OIL STOCKS
In Millions of Barrels



US EIA GASOLINE STOCKS
In Millions of Barrels



US EIA DISTILLATE STOCKS
In Millions of Barrels



***This report includes information from sources believed to be reliable and accurate as of the date of this publication, but no independent verification has been made and we do not guarantee its accuracy or completeness. This report should not be construed as a request to engage in any transaction involving the purchase or sale of a futures contract and/or commodity option thereon. The risk of loss in trading futures contracts or commodity options can be substantial, and investors should carefully consider the inherent risks of such an investment in light of their