

**THE HIGHTOWER REPORT**  
**EIA ENERGY REPORT & HISTORICAL COMPARISON**

24-Dec-2008

**EIA CRUDE OIL**

( In Millions of Barrels)

Week Of	Stocks	EIA Wkly Chg.	API Wkly Chg.	EIA			EIA 1992 - 2007				EIA Imports	Current EIA Capacity In Percent	Last Yr. EIA Capacity In Percent
				EIA Stocks Last Year	Change From Last Year	EIA 16-Year Average	Highest Stocks	Highest Year (Oldest Date)	Lowest Stocks	Lowest Year (Oldest Date)			
11/21/08	320.828	7.28	0.478	302.1	18.728	313.609	341.811	1998	284.199	2002	10.959	86.16	89.44
11/28/08	320.372	-0.456	-2.257	300.3	20.072	313.090	339.725	2006	284.277	2003	9.504	84.34	89.44
12/05/08	320.764	0.392	3.436	297.8	22.964	311.657	339.787	1993	277.932	2003	9.959	87.44	88.76
12/12/08	321.289	0.525	0.089	294.8	26.489	311.532	346.115	1993	272.808	2003	9.673	84.12	87.84
12/19/08	318.188	-3.101	-4.201	291.7	26.488	310.409	348.525	1993	274.453	2003	9.118	84.68	88.09
12/26/08						306.817	348.357	1993	270.676	2003			89.38

**EIA GASOLINE**

( In Millions of Barrels)

Week Of	Stocks	EIA Wkly Chg.	API Wkly Chg.	EIA			EIA 1992 - 2007				EIA Demand	EIA Demand Last Year	EIA Imports
				EIA Stocks Last Year	Change From Last Year	EIA 16-Year Average	Highest Stocks	Highest Year (Oldest Date)	Lowest Stocks	Lowest Year (Oldest Date)			
11/21/08	200.476	1.842	1.634	202.7	-2.224	199.945	213.301	1993	187.261	1996	8.844	9.356	0.98
11/28/08	198.942	-1.534	-0.416	204.1	-5.158	202.756	217.591	1993	190.483	1996	8.933	9.266	0.884
12/05/08	202.664	3.722	3.928	206.5	-3.836	204.386	222.584	1993	194.748	1996	9.015	9.348	1.106
12/12/08	203.959	1.295	-1.638	209.5	-5.541	205.016	222.11	1993	191.42	1996	9.175	9.287	0.802
12/19/08	207.295	3.336	1.714	212.5	-5.205	204.639	223.106	1993	191.053	1996	8.867	9.446	1.254
12/26/08						205.844	224.655	1993	192.014	1996		9.286	

**EIA DISTILLATE**

( In Millions of Barrels)

Week Of	Stocks	EIA Wkly Chg.	API Wkly Chg.	EIA			EIA 1992 - 2007				EIA Demand	EIA Demand Last Year	EIA Imports
				EIA Stocks Last Year	Change From Last Year	EIA 16-Year Average	Highest Stocks	Highest Year (Oldest Date)	Lowest Stocks	Lowest Year (Oldest Date)			
11/21/08	126.694	-0.186	0.572	134.7	-8.0	130.565	145.268	1998	114.49	1996	4.086	4.33	0.234
11/28/08	124.973	-1.721	2.27	134.8	-9.8	132.375	147.996	1998	117.922	2004	3.892	4.252	0.116
12/05/08	130.587	5.614	4.371	134.7	-4.1	133.183	149.556	1998	115.29	2000	3.672	4.34	0.103
12/12/08	133.523	2.936	-0.597	134.5	-1.0	132.340	152.754	1998	116.188	2000	4.09	4.629	0.175
12/19/08	135.337	1.814	-0.667	134.3	1.0	130.549	151.195	1998	114.693	2000	4.102	4.652	0.24
12/26/08						131.391	152.532	1998	116.064	2000		4.34	

**EIA HEATING OIL STOCKS**

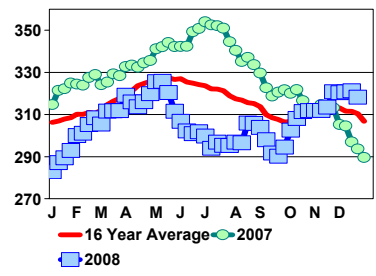
( In Millions of Barrels)

Week Of	Stocks	EIA Wkly Chg.	EIA Stocks Last Year	EIA		EIA 1994 - 2007				EIA Imports
				Change From Last Year	EIA 14-Year Average	Highest Stocks	Highest Year (Oldest Date)	Lowest Stocks	Lowest Year (Oldest Date)	
11/21/08	41.723	-0.412	45.2	-3.477	60.390	78.516	1994	44.666	2007	0.188
11/28/08	39.589	-2.134	44.5	-4.911	60.391	79.134	1998	43.632	2007	0.112
12/05/08	41.271	1.682	43.7	-2.429	60.134	80.53	1998	42.595	2007	0.099
12/12/08	41.852	0.581	42.8	-0.948	59.297	82.554	1998	40.544	2007	0.145
12/19/08	41.165	-0.687	41.9	-0.735	58.599	81.843	1998	39.82	2007	0.199
12/26/08					58.095	80.952	1998	38.438	2007	

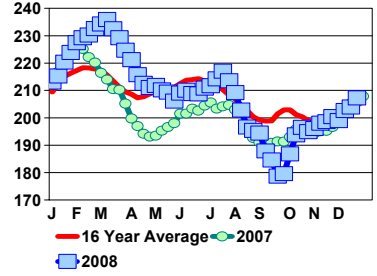
**PRE-EIA REPORT ESTIMATE: December 19th, 2008**

Crude Stocks +1.1 ml bls to +0.200 ml bls  
 Gasoline Stocks +1.0 ml bls to +0.500 ml bls  
 Distillate Stocks +0.600 ml bls to +0.200 ml bls

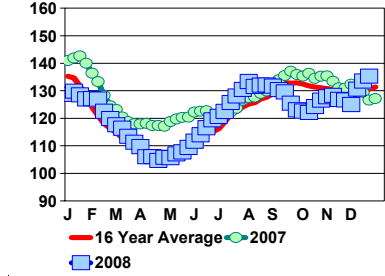
**US EIA CRUDE OIL STOCKS**  
In Millions of Barrels



**US EIA GASOLINE STOCKS**  
In Millions of Barrels



**US EIA DISTILLATE STOCKS**  
In Millions of Barrels



\*\*\*This report includes information from sources believed to be reliable and accurate as of the date of this publication, but no independent verification has been made and we do not guarantee its accuracy or completeness. This report should not be construed as a request to engage in any transaction involving the purchase or sale of a futures contract and/or commodity option thereon. The risk of loss in trading futures contracts or commodity options can be substantial, and investors should carefully consider the inherent risks of such an investment in light of their financial condition. Any reproduction or retransmission of this report without the express written consent of The Hightower Report is strictly prohibited.